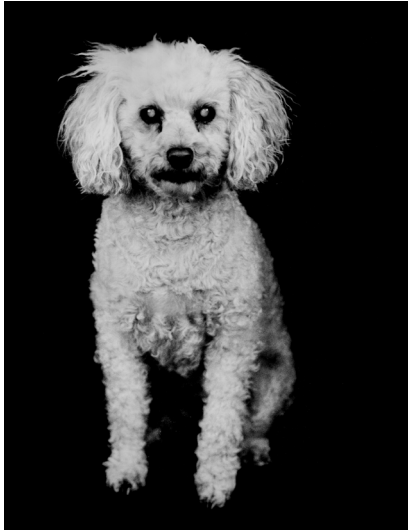


A Dog's Life

Exhibition dates: 21 September 2019 - 20 January 2020

Curators: Maudie Palmer AO and Eugene Howard



A Dog's Life, now showing in Hamilton Gallery's Print Gallery, celebrates the unique connection between humans and dogs, and includes works by Michael Leunig and Jacqueline Mitelman, with submissions also sought from the public.

Michael Leunig and Jacqueline Mitelman are acclaimed Australian artists. Mitelman is one of Australia's revered photographers, winning the National Portrait Prize in 2011. Michael Leunig has been hailed by The Sydney Morning Herald as the 'grassroots philosopher of innocence, melancholy and disillusionment', he was made a national living treasure by the National Trust in 1999. This exhibition showcases an exquisite selection of Leunig and Mitelman's finest canine focussed works, and also includes stories from author and broadcaster Phillip Adams and actor John Wood, amongst others.

PUBLIC SUBMISSIONS:

Members of the public are invited to submit two-dimensional artwork on paper for inclusion in *A Dog's Life*. This may include drawings, paintings, photographs, poems or other written text, no greater in size than A3. A record Loan Form is available from reception at the Hamilton Gallery, or on the website www.hamiltongallery.org. All works must be delivered to the gallery by 5pm 23rd November.

Hamilton Gallery reserves the right to only display works that are appropriate to be included in the exhibition *A Dog's Life*.

Media contact:

Ashlyn Hiscock | Mengda Liu | Promotions
(03) 5573 0460 | marketing@hamiltongallery.org

Image caption:

Artist: Jacqueline Mitelman
Title: *Isabella*
Media: Gelatin silver photograph
Date: 1998
Dimensions: 48 x 37 cm