

1962

TRUST

a generous legacy

2022

HAMILTON GALLERY TRUST 60TH ANNIVERSARY



HAMILTON GALLERY
107 BROWN STREET
HAMILTON
VIC 3300 AUSTRALIA

(03) 5573 0460
INFO@HAMILTONGALLERY.ORG
WWW.HAMILTONGALLERY.ORG

HAMILTON GALLERY TRUST 60TH ANNIVERSARY 1962-2022

©Published October 2022 by Hamilton Gallery Trust.

This work is copyright. Apart from any use as permitted under the Copyright Act 1968, no part may be reproduced without prior written permission from Hamilton Gallery. No illustration in this publication may be reproduced without the permission of the copyright owners. Requests and inquiries concerning reproduction and rights can be addressed to Hamilton Gallery.

Copyright for texts in this publication in each case is held by the authors.

Every attempt has been made to locate holders of copyright and reproduction rights of all images reproduced in this publication. Hamilton Gallery would be grateful to hear from any readers with further information.

Care has been taken to ensure that the colour reproductions match as closely as possible the supplied digital files of original artworks.

Images: Hamilton Gallery
Design: www.jumpropedesign.com.au

Hamilton Gallery is owned and operated by the Southern Grampians Shire Council with assistance from the State Government of Victoria.

CONTENTS

Message from the Trustees	05
From the Hamilton Gallery	06
Purpose of the Trust	08
Trust Timeline	10
Trustees from 60 years	14
60th Anniversary Acquisition	16
A Glimpse from 60 years	18
Major Donors	22
Major Bequests	23
Trust Members	24
Image Credits and References	26

We acknowledge the traditional custodians of the land within the Southern Grampians Shire, and pay our respects to their Elders, past and present, and the Elders from other communities visiting or residing within our Shire.

Members of Aboriginal and Torres Strait Islander communities are respectfully advised that a number of people mentioned in writing and depicted in photographs in the following pages have passed away.

MESSAGE FROM THE TRUSTEES

The Trustees would like to thank the Director and his staff for their work in mounting the exhibition and preparing this publication to celebrate 60 years of acquisitions through the Trust.

We are proud of our amazing collection of works of art and that the money and works have been donated and bequeathed by private individuals. These have been largely people local to Hamilton and the Western District who feel a connection to the gallery and value the role a public gallery can bring to an area.

To quote Herbert Shaw's 'strong personal viewpoint that art and culture should not only be for the big capital and provincial cities but should be available to those in smaller centres'.

We would like to thank Life Members who have subscribed to the Trust and have been strong supporters of Hamilton Gallery and its programs.

Founding Trustee Ron Lowenstern established the Trust within a year of the gallery itself starting, noting that unless the Shaw Bequest could be added to with new work "it would become a dead museum" rather than a thriving gallery. Our vision for the future is that we will continue to grow the collection to be a rich and developing resource for the benefit of all.

Trustees:

Jane Macdonald

Gordon Dickinson

Dr Sue Robertson



Jane Macdonald



Gordon Dickinson



Dr Sue Robertson



John Wolseley *Fire and Water - Moths, Swamps and Lava Flows of the Hamilton Region 2010*, wool weft on a cotton warp.

THIS ARTWORK WAS COMMISSIONED FOR THE GALLERY'S 50TH ANNIVERSARY.

Hamilton Gallery would like to thank Helen Brian for all her help and support in the development of this publication and exhibition.

FROM THE HAMILTON GALLERY



Howard Arkley *Australian Home*
1993, acrylic on canvas.



Joshua White

Like most regional galleries across Australia, Hamilton Gallery was initiated by an act of local philanthropy, in this case by Herbert and May Shaw. This act of generosity has echoed across sixty years with countless contributions by community members. A wonderful example of this generosity is the Hamilton Gallery Trust, a major force behind the collection's expansion.

As one of Australia's most important and longstanding trusts, the City of Hamilton Art Gallery Trust Fund Deed was signed on July 26, 1962 by the three founding Trustees: Mr Ronald Lowenstern, Dr Samuel Charles Fitzpatrick CBE, and Mr Walter Raymond Swaby. Six decades later, the Trust has seen a total of eleven trustees, who have all dedicated time, knowledge and skill to developing our important collection and ensuring the ongoing collecting future of Hamilton Gallery.

There is a common underlying element in the growth and expansion of the Hamilton collection, and that is 'generosity'. This collection is of national and international standing due to the munificence of those who have upheld the values of these objects, this collection, this community and our culture.

The Trust and Directors have actively targeted and acquired works to illuminate the unique culture of the Western District. All trustees have contributed significantly. It is revealing of the gallery's deep community ties that current trustee, Dr Sue Robertson, who has been a trustee for over 20 years, is the granddaughter of founding Trustee, Dr Samuel Fitzpatrick. Other important and distinguished trustees who have made an outstanding contribution to the stability and direction of the gallery include Olive McVicker OAM with 33 years of service, Mark Brian OAM with 38 years, and John Thomson with 30 years.

We acknowledge and honour these eleven trustees and the many trust members who have been so generous to Hamilton Gallery over the six decades of its history.

Joshua White, Artistic Director
Hamilton Gallery

**'THE TRUSTEES HAVE STRATEGICALLY
ACQUIRED ARTWORKS TO ENABLE
HAMILTON GALLERY TO DEVELOP A UNIQUE
AND NATIONALLY SIGNIFICANT COLLECTION
SUCH AS ARKLEY'S PAINTING, WHICH IS ONE
OF HIS MOST ICONIC WORKS.'**

JOSHUA WHITE, ARTISTIC DIRECTOR, HAMILTON GALLERY

'...WORTHY OF
A POSITION IN
THE CITY OF
HAMILTON ART
GALLERY...'

HAMILTON GALLERY TRUST DEED, 26 JULY 1962



TRUST PURCHASE

Margarita Stipnieks
Mother and child n.d.
1st work purchased by the
Hamilton Gallery Trust Fund

EVENT

The Hamilton Gallery Trust
Fund was established

BEQUEST

T.H. Taylor Bequest

APPOINTMENTS

Ron Lowenstern
Trust Founder & Chairman 1962-1978

Dr Samuel Fitzpatrick
appointed as Trustee 1962-1978

Walter Swaby
appointed as Trustee 1962-1968

APPOINTMENT

Olive McVicker OAM
appointed as Trustee 1969-2000



TRUST PURCHASES

Roland Wakelin
Parramatta Park 1936

Goran Warff & Ann Wolff
Bowl 'Brava' series 1967/71

BEQUEST

Roland Tatlock Bequest



APPOINTMENT

Julian Faigen
appointed as Director of
Hamilton Gallery 1975-1985



APPOINTMENTS

Mark Brian OAM
appointed Trustee 1978-2016

Robin Ritchie
appointed Trustee 1978-1982

TRUST PURCHASES

Michael Shannon
Everlastings in a glass 1975

William Hogarth
Marriage a La Mode 1745

>1961 >1962 >1966 >1969 >1971 >1972 >1973 >1975 >1977 >1978



APPOINTMENT

John Ashworth
appointed as Director of Hamilton Gallery
1961-1975

BEQUEST

E.S. McLeod Bequest



TRUST PURCHASE

Rupert Bunny
Portrait of Mrs Archibald Currie
1911



TRUST PURCHASES

Charles Blackman
Red Nude In A Landscape c.1972

Louis Buvelot
Wannon Falls c.1867

Dora Wilson
Calvi Corsica n.d.

BEQUEST

Barber Bequest



EVENT

Paul Sandby Ball
organised by Olive McVicker &
Committee from Trust members
for Sandby Restoration Fund

TRUST PURCHASE

Sidney Nolan
Crucifixion 1956

TRUST PURCHASE

Paul Sandby
Views of Windsor Castle

BEQUEST

Dr Kenneth Hadley Bequest



TRUST COMMISSION

Hendrik Forster
Coffee Service 1984



APPOINTMENT

John Thomson
appointed Trustee 1986-2016

TRUST PURCHASE

Stieg Persson
Painting 1986



EVENT

30th Anniversary of the Hamilton
Gallery Trust

TRUST PURCHASE

Samuel Palmer
The Moring of Life 1860/61

>1979 >1980 >1982 >1984 >1985 >1986 >1988 >1992 >1993



TRUST PURCHASES

William Hogarth
Rake's Progress 1735

William Hogarth
Harlot's Progress 1732

BEQUESTS

T.H. Taylor and L. Taylor
Bequest

T.C. McKellar Bequest



APPOINTMENT

Tim Menzel
appointed Trustee 1982-1986

EVENT

20th Anniversary of the
Hamilton Gallery Trust

TRUST PURCHASES

Paul Sandby
XII Views in South Wales

Napier Waller
Centaur and Satyr c.1922



APPOINTMENT

Alan Sisley
appointed as Director of Hamilton
Gallery 1985-1988

TRUST COMMISSION

Richard Weatherly
Emus on the Western Plains 1985



APPOINTMENT

Daniel McOwan OAM
appointed as Director of Hamilton
Gallery 1988-2015

TRUST COMMISSION

Ragnar Hansen
Coffee Service 1988

TRUST PURCHASE

John Russell
Miss Sophia Vansittart c.1791



TRUST COMMISSION

Brian Dunlop
Portrait of Olive McVicker 1993

TRUST PURCHASE

Tim Maguire
Untitled 97U66 1997



BEQUEST

Stan & Bess Robson Bequest

TRUST PURCHASES

Lloyd Rees
Balmoral 1927



Giovanni Battista Piranesi
The Baths of Trajan 1720

BEQUEST

Katie Mein Bequest



EVENT

40th Anniversary of the Hamilton Gallery Trust

TRUST PURCHASE

Ildiko Kovacs
Lavender 2001

TRUST PURCHASE

Nicholas Chevalier
Mt Abrupt, The Grampians c.1864



›1995

›1997

›1999

›2002

›2004

›1994

›1996

›1998

›2001

›2003



TRUST PURCHASE

Howard Arkley
Australian Home 1993

BEQUEST

Dempster Bequest

TRUST DONATION

Geoff Handbury AO & Helen Handbury AO Fund



TRUST PURCHASE

Gerald Benney
Centrepiece 1964

BEQUEST

R.G.L. and M.L. Taylor Bequest
Molly Foster Endowment Fund

APPOINTMENT

Dr Sue Robertson
appointed Trustee 2001-present

BEQUEST

Seeger Bequest



TRUST PURCHASES

Thomas Clark
Wannon Falls c.1865

Klaus Moje
Green Field 2002

Christopher Dresser
Tureen 1880

BEQUEST

Elizabeth Summons Bequest



TRUST COMMISSION

John Wolseley
Fire and Water - Moths, Swamps and Lava Flows
of the Hamilton region 2010

BEQUEST

Roza & Bela Sulzberger Bequest



APPOINTMENTS

Gordon Dickinson
appointed Trustee 2016-present

Jane Macdonald
appointed Trustee 2016-present

TRUST PURCHASES

Rick Amor
Waiting 2016

Ah Xian
China, China - Bust 35 1999



APPOINTMENT

Joshua White
appointed as Director of Hamilton
Gallery 2020-present

TRUST PURCHASES

Patricia Piccinini
Shoeform (sprout) 2019

Rew Hanks
Playing for Keeps 2016 & *Battle of Wills* 2016

›2011

›2014

›2016

›2020

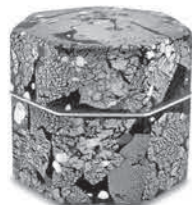
›2006

›2012

›2015

›2018

›2022



TRUST PURCHASE

Kyohei Fujita
Red and White Plum Blossoms c.1988

EVENT

50th Anniversary of the Hamilton Gallery Trust

BEQUESTS

Valerie Sheldon Bequest

Hilda & Robert Henderson Bequest



APPOINTMENT

Sarah Schmidt
appointed as Director
of Hamilton Gallery
2015-2018



EVENT

60th Anniversary of the Hamilton Gallery Trust

TRUST PURCHASE

William Robinson
After the Storm from Springbrook, study 1998

BEQUEST

Vera Lacey Bequest

TRUSTEES FROM 60 YEARS

Hamilton Gallery has been especially fortunate to have attracted numerous donors, benefactors and supporters.

Many people have invested in the growth of the gallery and its collection, not only through monetary and artistic donations, but also through the gifts of time and expertise. The Trust and Trust members are a genuine representation of this generosity and the strong connection between the community and the collection.

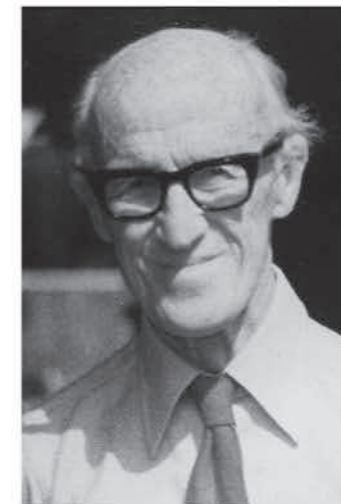
'...THE HAMILTON GALLERY TRUST PLAYS A VITAL ROLE IN THE LIFE OF THE GALLERY BY ENSURING THAT ITS REMARKABLE COLLECTION IS DEVELOPED AND ENHANCED THROUGH SIGNIFICANT ACQUISITIONS. ITS UNPARALLELED SUPPORT OF HAMILTON GALLERY OVER SIX DECADES IS A STRIKING TESTAMENT TO THE VISION AND PASSION OF THE COMMUNITY.'

DR ALISON INGLIS AM



Walter Swaby

1962-1968



Ronald Lowenstern

1962-1978



Dr Samuel Fitzpatrick CBE

1962-1978



Olive McVicker OAM

1969-2000



Mark Brian OAM

1978-2016



Robin Ritchie

1978-1982



Tim Menzel

1982-1986



John Thomson

1986-2016



Dr Sue Robertson

2001-Present



Gordon Dickinson

2016-Present



Jane Macdonald

2016-Present

60TH ANNIVERSARY ACQUISITION

Eugene von Guérard's *Mount Arapiles towards the Grampians* has not been on public view for the past 152 years. It was painted in January 1870 for The Hon. John Alexander MacPherson, during his brief term as the seventh Premier of Victoria.¹

The connection between the artist and his patron firmed during the 1870s when von Guérard was, in effect, the first director of the National Gallery of Victoria and MacPherson a founding trustee of the Public Library, Museums and National Gallery of Victoria. In 1876, MacPherson commissioned a second work from von Guérard, this time a reprise of an important 1864 composition depicting Gippsland's Snowy Bluff, a subject sketched by the artist when, in 1860 he accompanied Alfred Howitt on a government-sponsored expedition.² MacPherson's version of *View of the Snowy Bluff in the Valley of the Wonnangatta, Gippsland*, 1876, which received a glowing review in the *Argus*, is now in the Kerry Stokes Collection, Perth.³ For MacPherson, one of the appeals of the view of the Grampians from Mount Arapiles may have been that, as noted by von Guérard, it looked towards Dundas, his electorate between 1866 and 1878.⁴

Von Guérard spent four days sketching at Mount Arapiles in October 1868. He had long been aware of the imposing sandstone-quartzite formation that rises from the flat Wimmera Plains north-west of the Grampians (Gariwerd). Known as Dyuritte to its Traditional Owners, the Wotjobaluk, Jaadwa, Jadawadjali, Wergaia and Jupagulk peoples, it was named Mount Arapiles by the explorer Major Thomas Mitchell in 1836.⁵ And it was through Mitchell's two-volume publication, *Three Expeditions into the Interior of Eastern Australia* (1839) that von Guérard discovered it.⁶ In the 1850s von Guérard made copies of the illustrations in Mitchell's book, including those of the impressive and geologically significant Mount Arapiles. Then, in 1862, his fellow artist and good friend, Nicholas Chevalier, travelled to Mount Arapiles with their mutual friend, the eminent German geophysicist, Georg von Neumayer. Von Guérard had accompanied them on the first leg of the expedition, to Cape Otway. On his solo expedition to Mount Arapiles in 1868, von Guérard stayed at properties owned by the Wilson brothers – John Wilson at Woodlands, Samuel Wilson at Longerenong and Charles Wilson at Walmer – where he saw Chevalier's paintings on the walls. At Alexander Wilson's property, Vectis, he was reunited with one of Chevalier's most important works, *Mount Arapiles and the Mitre Rock* 1863.⁷ St Mary's Lake Station, a property managed for Wilson by Mr McDonald and close to Mount Arapiles, was von Guérard's base for four days sketching on and around the mountain.

On the first day, Wednesday 14 October, von Guérard sketched the view that became the subject of *Mount Arapiles towards the Grampians*. Along with the sketchbook drawing and a related large drawing, his experience of the day is captured in diary entries at the back of this sketchbook. After a two hour walk from the homestead, he climbed – almost certainly up Central Gully – and then 'hand climbed' up 'broken and fissured rocks' to find this viewpoint. There, despite rain which forced him to sketch from the shelter of 'a gorge of the main rock,' he was delighted by 'mountainside eagles, butterflies [and] flowers.' To the right of the main drawing he made studies, with descriptive notes, of the Weiss bluhend Erika (white-blooming erica), a star-shaped flower (the fairy waxflower?) and a bush of 'violet to mid grey' bell-shaped flowers (*Prostanthera rotundifolia*?). Later that day, he changed position to a vantage point near the top of Central Gully and embarked on the second, larger drawing – the same outward view but framed by different cliffs. He faithfully reproduced, at top left, a distinctive sheer wall capped by twin dark horizontal breaks that climbers immediately recognise as the west-facing 'Wind Wall' on 'Starless Buttress'.⁸ He worked 'till 6 o'clock' and was guided back to the station, in darkness, by shots fired by his 'worried' host.

The author is grateful to Keith Lockwood, Geoff and Maureen Little, and Ross Cayley, for their generous assistance in identifying von Guérard's vantage point for this painting.



**'ARGUABLY,
THE
GREATEST
LANDSCAPE
PAINTER TO
WORK IN
AUSTRALIA
IN THE
NINETEENTH
CENTURY.'
DR RUTH PULLIN**

Eugene von Guérard *Mount Arapiles towards the Grampians*
1870, oil on board.

Von Guérard discovered the spectacular view depicted in *Mount Arapiles towards the Grampians* at the top of the cliffs above and to the northeast of Central Gully. On the north side of the gully, after a scramble southeast towards the cliff edge, he settled on a vantage point looking southeast through Central Gully towards the Grampians and Black Range. From there his view was dramatically framed by the distinctive free-standing pinnacle, Bluff Major, on the left and the cliffs on the south side of Central Gully on the right.⁹ The artist, with his deep and sustained interest in geological subjects, was captivated by the square stepped, blocky forms and overhangs that characterized the monumental Bluff Major. Bluff Major is typical of numerous isolated free standing and undercut pinnacles found on the east facing cliffs, their forms sculpted by wave action during the marine incursion of the late Miocene.¹⁰ On the right, the afternoon sun illuminates and casts shadows over a wall of metamorphosed 'quartzeous sandstone' – identified by both Mitchell and von Neumayer – highlighting the cracks and fissures in its gnarled surface. Far below, the twenty-metre high Taylor's Rock, known to climbers as Declaration Crag, rises from the sunlit Wimmera plains like an ancient ruin. Despite its tiny presence in the landscape it is depicted with startling accuracy.¹¹ The site has been protected since 2019, following the rediscovery of its cultural significance.

Through the two figures (and their dog) in the foreground the viewer is invited to share, vicariously, the exhilaration of being perched high on this rocky outcrop, close to skies of swiftly moving clouds and soaring birds, with the plains of Mitchell's Australia Felix stretching out far below. The attention of the standing figure has been captured by the activities of his seated companion, perhaps the artist with his sketch pad.

Mount Arapiles towards the Grampians is one of two Arapiles subjects painted by the artist. The second *The Mitre Rock and Lake from Mount Arapiles*, like plate 31 in Mitchell's pioneering publication, portrays the view to the northeast. It was commissioned by Melbourne banker and politician Sir George Verdon in 1874.

The return of von Guérard's *Mount Arapiles towards the Grampians* to the public arena brings with it new insights into the life of his politically significant patron, and his own remarkable career as the most adventurous and, arguably, the greatest landscape painter to work in Australia in the nineteenth century.

Dr Ruth Pullin

A GLIMPSE FROM 60 YEARS



TOP
Brian Dunlop *Portrait of Olive McVicker* 1993, oil on canvas.

BOTTOM
Masahiro Asaka *Surge* 15.2 2012, glass, cold worked and cast.

OPPOSITE PAGE
Rupert Bunny *Mrs Archibald Currie* 1911, oil on canvas.

CURRENTLY
HAMILTON
GALLERY HAS
THREE TRUST
ARTWORKS ON
DISPLAY AT THE
ART GALLERY
OF SOUTH
AUSTRALIA.



AS ONE OF OUR MOST TREASURED COLLECTION
PIECES, THIS PAINTING HAS BEEN REVERED AND
STUDIED BY MANY SCHOLARS SUCH AS JANE
CLARK, SENIOR RESEARCH CURATOR OF MONA.



TOP
Ildiko Kovacs *Lavender*
 2001, oil on plywood.

BOTTOM
 Exhibition installation -
Trust: A Generous Legacy.



THIS ARTWORK IS SHOWCASED IN THE HAMILTON GALLERY'S 60TH ANNIVERSARY PUBLICATION TITLED HG:60. NINE SCHOLARS FROM ACROSS AUSTRALIA EXPLORED AND EXAMINED THE COLLECTION TO DEVELOP A CELEBRATORY EXHIBITION AND 200+ PAGE BOOK. MANY TRUST ACQUISITIONS WERE FEATURED.



TOP
William Robinson *After the storm from Springbrook, study* 1998, oil on linen.

BOTTOM
Charles Blackman *Red nude in a landscape*
 c.1972, oil on canvas.

MAJOR DONORS

- | | |
|-----------------------------------|-----------------------------|
| Peter Lindsay | Heather Waller |
| Dr & Mrs S C Fitzpatrick | Geoffrey Handbury AO |
| C C L Gaussen & Lady Mary Gaussen | Helen Handbury AO |
| Ron & Did Lowenstern | Bill & Joan Hyslop |
| Dr D H Chamberlain | Anna Lyons |
| Rod Fyffe OAM | Geoffrey Brash |
| Helen Johns | Alan & Joan Blain |
| Dr B Roberts | Allan Myers AC QC |
| Mr K O'Shannessy | Maria Myers AC |
| Patrick Corrigan | Lesley Kehoe |
| M Brett | Pauline Gandel AC |
| Max Harris | Jason Yeap OAM |
| Minya Lipkes | Dr Barbara van Ernst AM |
| Olive Ferguson | Eda Ritchie AM & family |
| Vera Gaussen | Sir Roderick Carnegie AC |
| Edward Heffernan | Dr & Mrs J C de Kievit |
| | Friends of Hamilton Gallery |

**'BY JOINING THE TRUST, YOU BECOME
A VALUED PATRON OF THE ARTS IN
OUR REGION, ALONGSIDE A CANON
OF FELLOW ARTS ADVOCATES KEEN
TO ENSURE THE CONTINUED SUCCESS
OF HAMILTON GALLERY.'**
DR SUE ROBERTSON, TRUSTEE

MAJOR BEQUESTS



Margarita Stipnieks *Mother and child* c.1962, oil on board.

**THIS ARTWORK
WAS THE FIRST
ACQUISITION
BY THE TRUST.**

- Herbert & May Shaw Bequest 1957
- T H Taylor & Lucy Taylor Bequest
- E M McLeod 1966
- Barber Bequest (Oriental & Indian Art)
- Kevin Taylor Bequest
- Dr Kenneth Hadley Bequest 1980
- Roland Tatlock Bequest
- Katie Mein Bequest
- Dempster Bequest
- Robson Bequest
- R G L & M L Taylor Bequest (Molly Foster)
- M L Foster Bequest 1998
- Seger Bequest 2001
- Elizabeth Summons Bequest
- Valerie Sheldon Bequest
- Hilda & Robert Henderson Bequest
- Rosza & Bela Salzberger Bequest
- Vera Lacey Bequest 2018

TRUST MEMBERS

Trust members are essential to Hamilton Gallery. Their generous donations have facilitated the expansion of our collection and the enhancement of the cultural life of this community. By becoming a member or donating to the trust, you are ensuring the future advocacy and collecting of Hamilton Gallery. We thank all members and those who have donated.

CURRENT

Mr B.J. Aarons OAM	Mr P. Di Sciascio	Mr B. Kehoe	Mr J.D. Robertson
Mrs F. Aarons	Mrs A. Dickinson	Ms L. Kehoe	Dr K. Robertson
Mrs N. Allen	Mr G. Dickinson	Mr J.C. Kelsall	Dr S. Robertson
Mrs L. Anderson	Mrs K. Dopheide	Mrs M. Kelsall	Dr D. Robson
Dr E.L. Arthur	Mrs M. Douglas	Ms M. Knight	Ms M. Robson
Mr P. Bade	Mrs C. Drew	Mr B.A. Ladd	Mrs J. Rodda
Mr C. Baulch	Mr C. Dunkley	Mrs J. Ladd	Mrs M.M. Ross
Mrs T. Baulch	Mrs M. Dyer	Mr D. Laidlaw	Dr A. Ryan
Mrs T.G. Baylis	Mr J. Earl	Mrs M. Laidlaw	Ms S. Schmidt
Mrs S. Benjamin OAM	Mrs J. Earl	Mr R.P.C. Lowenstern	Mrs L. Slorach
Mrs J. Blain	Ms J.M. Evans	Ms C. Macdonald	Mrs A.M. Taylor
Mrs H. Brian	Mr R.T. Evans	Mr H. Macdonald	Mrs C. Thomson
Mr M. Brian OAM	Mrs T.G. Evans	Mrs J. Macdonald	Mr J. Thomson
Mrs M-A. Brown	Mrs S.P.J. Falkenberg	Mrs E. Macgugan	Mr J. Van Beek
Mrs A. Burgess	Mr T. Fleetwood	Mr H. Mackinnon	Mr N.D. Walker
Mr G.W. Cain	Dr J.D. Fleming	Mrs S. Mackinnon	Mrs R. Walter
Mr E.J. Cameron	Mrs H. Fraser	Mrs H. MacLean	Mr R. Walter AM
Mrs M. Cameron	Mr R.J. Fraser	Mr N. MacLean	Dr A.C. Wark
Mrs R. Cameron	Mr W. Freeman JP	Mr R. Mann	Mrs F. Wark
Ms M. Campbell	Mr R. Fyffe OAM	Mrs S. Mann	Mr G. Whipp
Mrs J. Carty	Mrs D.C. Gibbs	Mr E. McLarty	Ms N.E. White
Mrs W. Carty	Mrs J. Gordon	Mrs M. McLarty	Mrs V. Whitehead
Dr H.D. Chamberlain	Ms R. Greenwood	Mr D. McOwan OAM	Mrs S. Whiting
Mrs A.K. Christie	Mrs J.W. Gubbins	Mr T.D. Menzel	Mr M. Winter-Cooke
Mr A. Christie	Mr A. Gurry	Mrs R. Mercer	Mrs M. Youngman
Mrs A. Christie	Mrs G. Gurry	Mrs S. Millear	The Commonwealth Bank of Australia
Dr B. Christie	Ms K. Hattam	Mr G. Moffatt AM	Friends of Hamilton Gallery
Mrs E.M. Christie	Mrs R.J. Heard	Mrs M. Myers AC	The Hamilton & Alexandra College
Mrs K.L. Christie	Mrs B. Hope	Mr A. Myers AC QC	
Mrs S. Clarke	Mr R.M. Hunter	Mr S.H. Newton AO	Hamilton Quilters Inc.
Dr G. Coggins	Mrs J. Hutton	Mrs J. Paterson	The Hamilton Spectator Partnership
Mrs L. Coggins	Mr T. Hutton	Mr R. Paterson	
Mrs J.A. Coutts	Dr A. Hyslop	Miss F. Pentland	The Hamilton Wool & Craft Guild
Dr J.C. de Kievit	Dr P. Hyslop	Mr S. Reynolds	
Mrs J. de Kievit	Mr P.L. Jacobson	Mrs A.N. Roach	Monivae College
Dr R. Dempster	Dr L. Jenkins	Mrs M. Roberts	Sinclair Wilson
	Mrs J. Jones	Mr B. Roberts OAM	

OVER 600
WORKS
HAVE BEEN
ACQUIRED BY
THE TRUST,
AT A VALUE
OF OVER
\$4.3 MILLION.

IMAGE CREDITS

PAGE 4

John Wolseley *Fire and Water - Moths, Swamps and Lava Flows of the Hamilton Region* 2010, wool weft on a cotton warp.

Commissioned by Hamilton Gallery Trust Fund 2011, with assistance from The Myer Foundation and the Helen Macpherson Smith Trust. Made to commemorative Hamilton Gallery's 50th anniversary. Hamilton Gallery Collection.

PAGE 6

Howard Arkley *Australian Home* 1993, acrylic on canvas.

Purchased by Hamilton Gallery Trust Fund 1994. Hamilton Gallery Collection.

PAGE 17

Eugene von Guérard *Mount Arapiles towards the Grampians* 1870, oil on board.

Purchased by the Hamilton Gallery Trust Fund 2022, to mark the 60th Anniversary of the Hamilton Gallery Trust Fund. Hamilton Gallery Collection.

PAGE 18

Brian Dunlop *Portrait of Olive McVicker* 1993, oil on canvas.

Commissioned by Hamilton Gallery Trust Fund 1964. Hamilton Gallery Collection.

Masahiro Asaka *Surge 15.2* 2012, glass, cold worked and cast.

Purchased by Hamilton Gallery Trust Fund 2012. Hamilton Gallery Collection.

PAGE 19

Rupert Bunny *Mrs Archibald Currie* 1911, oil on canvas.

Purchased by Hamilton Gallery Trust Fund 1971. Hamilton Gallery Collection.

PAGE 20

Ildiko Kovacs *Lavender* 2001, oil on plywood.

Purchased by Hamilton Gallery Trust Fund 2002 - Geoff and Helen Handbury Fund. Hamilton Gallery Collection.

Exhibition installation - *Trust: A Generous Legacy*.

PAGE 21

William Robinson *After the storm from Springbrook, study* 1998, oil on linen.

Purchased by the Hamilton Gallery Trust Fund 2018, with additional support from Allan Myers AC QC & Maria Myers AC. Hamilton Gallery Collection.

Charles Blackman *Red nude in a landscape* c.1972, oil on canvas.

Purchased by Hamilton Gallery Trust Fund 1973. Hamilton Gallery Collection.

PAGE 23

Margarita Stipnieks *Mother and child* c.1962, oil on board.

Purchased by Hamilton Gallery Trust Fund 1962. Hamilton Gallery Collection.

REFERENCES: 60TH ANNIVERSARY ACQUISITION, BY DR RUTH PULLIN

1. The family later adopted ‘Macpherson,’ with a lower case ‘p’, as the preferred form of their family name. **2.** Eugene von Guérard *View of the Snowy Bluff on the Wonnangatta River* 1864, oil on canvas, 95.2 x 152.7 cm, National Gallery of Victoria **3.** *Argus*, 24 July 1876, p.5 **4.** Von Guérard, Sketchbook XXXVI, 1867-68-69-70, Dixson Galleries, State Library of New South Wales, DGB16, v. 14a, pp. [84] **5.** So named because 23 July, the day Mitchell climbed the mount, was the anniversary of the Battle of Salamanca. **6.** Mitchell, T.L., *Three Expeditions into the Interior of Eastern Australia*, T. & W. Boone, London, 1839, Vol II, pls. 31 and 33, p. 191 **7.** Nicholas Chevalier, *Mount Arapiles and the Mitre Rock*, 1863, National Gallery of Australia. On his visit, von Guérard looked out for Chevalier’s vantage point for both this work and *View from Mount Arapiles*, 1863, National Gallery of Victoria. **8.** Eugene von Guérard, *East south east view from the Arapiles*, 14 u.16-17 Oct. 68, 1868, pencil and crayon, 35.4 x 58.3 cm. Folio 7 in album, *Wimmera*, Dixson Library, State Library of New South Wales, Item 09. PXX 18. Ross Cayley, Senior Geologist, Geological Survey of Victoria, email correspondence, 2 August 2022. **9.** Ross Cayley, email correspondence, 1 August, 2022. On the basis of extensive field work, Keith Lockwood, author of *Arapiles: A Million Mountains*, Skink Press, Natimuk, 2008, with Geoff and Maureen Little of Natimuk, independently identified the view as that looking down Central Gully to the southeast towards the Grampians and Black Range, with Taylor’s Rock in the middle distance, email correspondence, 30 July 2022. **10.** Cayley, R.A and Taylor, D.H., *Grampians. Special Map Area Geological Report*, Geological Survey Report 107, Natural Resources and Environment, Crown (State of Victoria), 1997, p. 19 **11.** Keith Lockwood, email correspondence, 27 July 2022

a generous legacy



For further information please contact
Hamilton Gallery on (03) 5573 0460
or visit our website hamiltongallery.org



@hamiltongalleryvic



107 BROWN STREET
HAMILTON VIC 3300
HAMILTONGALLERY.ORG